

Exploring the Roots of Your Organization (CEOS)

Shirley C. Eagan, Ed.D.
WVU Extension Professor Emerita

If you have started tracing your family roots, you may have discovered some things you did not know. Where did your family come from? What did your ancestors do to earn a living? How many children did they have and what did they do? These stories can be interesting to you and your family.

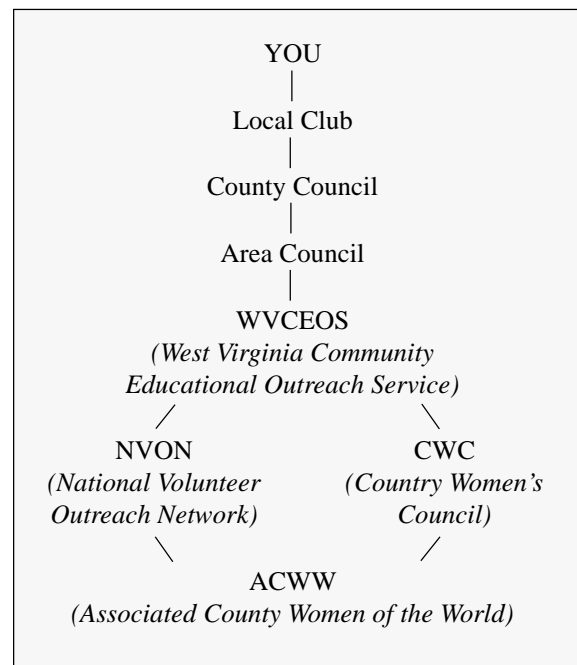
Your membership in the West Virginia Community Educational Outreach Service (WVCEOS) probably means you want to learn to improve yourself, your family, home, and community. This organization may be compared to a tree whose roots date to before 1914 in West Virginia. These roots have grown and helped to develop the organization's principles, beliefs, and goals, which continue to benefit state families and communities.

Take a few minutes to see how much you know about the CEOS organization. Answer the following questions. See the end of the leaflet for help.

1. What do the letters "C-E-O-S" stand for?
2. Who is state president of CEOS?
Who is your area representative?
Who is county president?
3. How many educational committees does the organization have? Can you name them?
4. In what month is CEOS Week celebrated?
5. Where/when is the state CEOS annual meeting held?
6. When was your club organized?
7. To what two national organizations do you belong because you are a member of the state CEOS?
8. To what international group do you belong?
9. Who was Gertrude Humphreys? What did she do to assist the organization?
10. Name two or three current club projects that support families and your community.

CEOS members are part of a large organization. But did you realize that your membership extends beyond the club and county organizations into state, national, and international affiliations? You are linked to others throughout the world.

Look at the following diagram and then discover the part each group plays in your development.



As a CEOS member, you are part of a local club with roots to 1914, when the first club was organized in West Virginia. The programs and activities in your club are determined by the needs and interests of the members. Most clubs try to have equal parts of education (program topic), business, and socializing when they meet.

Your club has at least one representative on the county council, a group that assists in planning countywide events and educational programs. Your representative takes club information to council meetings and brings back information. Try to discover some of the projects of your county council.

Each county is also represented on an area council. The six area councils in West Virginia are made up of delegates from member counties. Do you know which area your county is in? This council coordinates area activities, including meetings and trainings. An area representative serves as the leader of this group.

You are a member of the West Virginia Community Educational Outreach Service (WVCEOS). This group has had several names over the years, including Farm Women, Farm Women's Bureau, Home Demonstration Council, and Extension Homemakers. WVCEOS was established in 1998. This group assists in planning the state conference, implementing educational committee goals, and coordinating state projects. The council newsletter, the "Open Line," is the communication link between the state council and county and club leaders. Each club president receives this newsletter.

You are also a member of a new group, the National Volunteer Outreach Network (NVON), established in 1995. NVON brings together organizations that are members of or are willing to work with the ACWW to promote friendship and understanding in the world. Currently, NVON links seven member states together and meets annually in a member state. West Virginia hosted this meeting in 2001.

In addition to NVON, you belong to the Country Women's Council (CWC). This council, organized in 1939, is the United States link between member organizations and the world organization. CWC, made up of representatives from several rural women's groups, strives to implement projects of the world organization.

You are also a member of the Associated Country Women of the World (ACWW), the international organization begun in 1929. ACWW grew out of an awareness by women that they needed an organization in which they could work together to strengthen the family by improving the lives of rural women around the world.

Your organizational tree spreads throughout the world, encompassing a large group of related organizations, each helping women better their lives, their families, and their communities. Remember, the primary purpose of the CEOS program is education. Other purposes are to further strengthen, develop, coordinate, and extend adult education in cooperation with the WVU Extension Service.

You as a CEOS member should continue your education and seek to broaden your horizons in serving your family and community. You will help your organization to continue to thrive and expand its roots to new members and families.

Quiz Helps

1. Community Educational Outreach Service.
2. In 2002, the state president is Mida Peterson; if topic is presented in 2003 or later, someone else will be state president. Area representative and county president vary by county. Check your yearbook for their names.
3. Three educational committees: continuing education, family, and marketing and membership.
4. CEOS Week is held in May.
5. State conference is held at WVU Jackson's Mill, usually in October.
6. Answer will vary with each club. Ask your club president if you do not know.
7. National Volunteer Outreach Network (NVON) and Country Women's Council (CWC).
8. Associated Country Women of the World (ACWW).
9. She was state leader of Extension Home Economics and state adviser to the Farm Women's and Extension Homemakers program from the 1920s through the mid-1960s. She encouraged the organization's growth and entry into many worthwhile projects. She wrote *Adventures in Good Living*.
10. Answer will be different in each club. Discuss the projects with other members.

2002: 10M