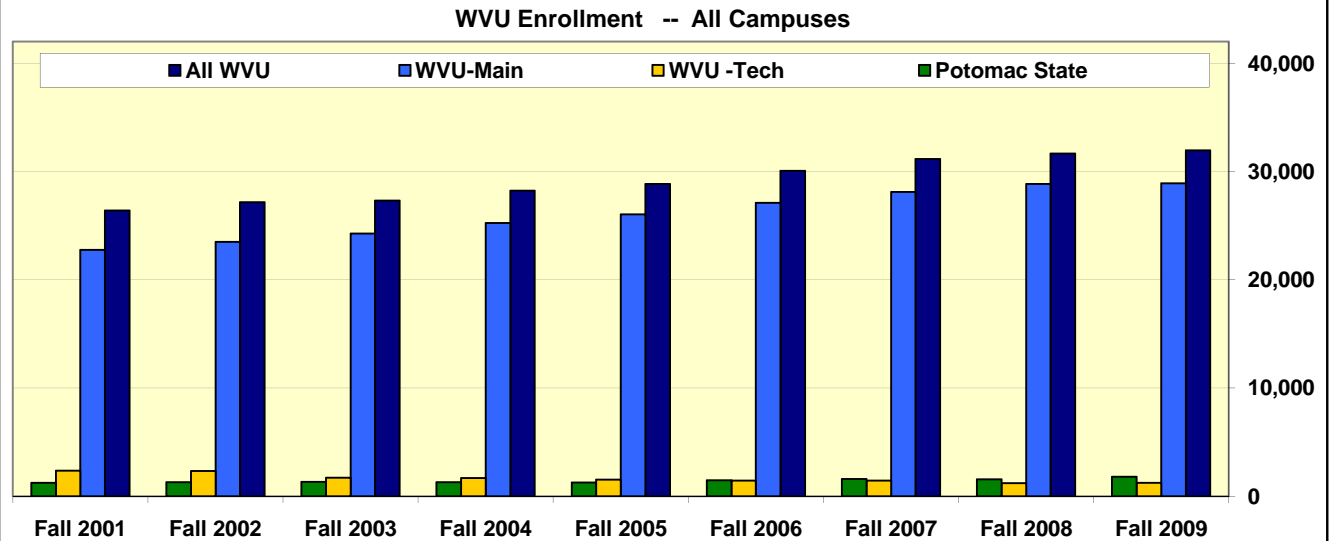


West Virginia University - Decade Reports

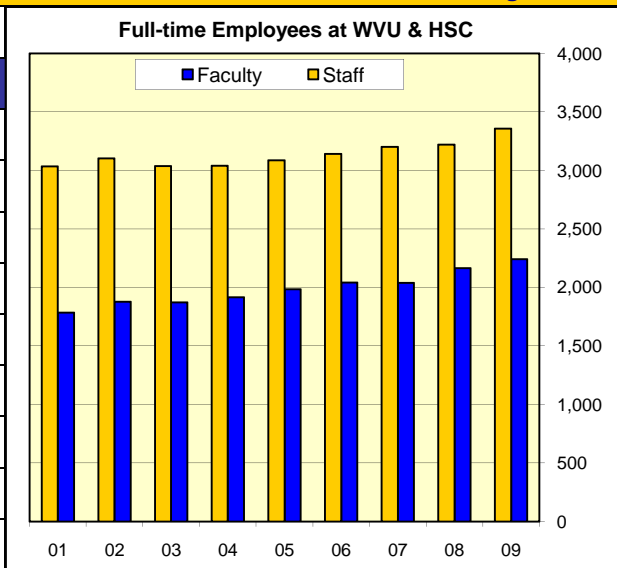
WVU All Campuses - Headcount Enrollment

Year	Potomac State	WVU - Tech	WVU- Main	All WVU
Fall 2009	1,810	1,244	28,898	31,952
Fall 2008	1,582	1,224	28,840	31,646
Fall 2007	1,608	1,450	28,113	31,171
Fall 2006	1,485	1,466	27,115	30,066
Fall 2005	1,279	1,535	26,051	28,865
Fall 2004	1,304	1,685	25,255	28,244
Fall 2003	1,330	1,722	24,260	27,312
Fall 2002	1,308	2,357	23,492	27,157
Fall 2001	1,254	2,374	22,774	26,402

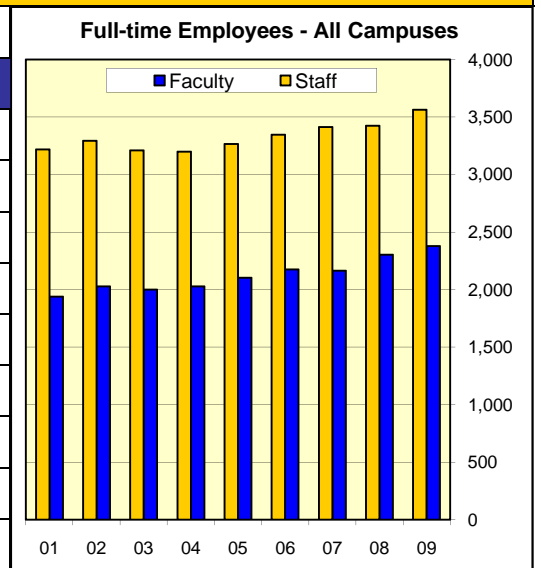


West Virginia University Employees

Full-time Employees WVU & HSC		
Year	Faculty	Staff
Fall 2009	2,241	3,357
Fall 2008	2,164	3,219
Fall 2007	2,038	3,200
Fall 2006	2,043	3,142
Fall 2005	1,984	3,086
Fall 2004	1,917	3,040
Fall 2003	1,873	3,036
Fall 2002	1,879	3,103
Fall 2001	1,785	3,033



Full-time Employees All Campuses		
Year	Faculty	Staff
Fall 2009	2,378	3,564
Fall 2008	2,302	3,425
Fall 2007	2,165	3,412
Fall 2006	2,175	3,347
Fall 2005	2,102	3,266
Fall 2004	2,027	3,198
Fall 2003	2,001	3,210
Fall 2002	2,029	3,293
Fall 2001	1,939	3,217



West Virginia University - Decade Reports

West Virginia University - Main Campus Enrollment Profile

Students from all 50 states plus DC, 3 US territories and 100 countries.

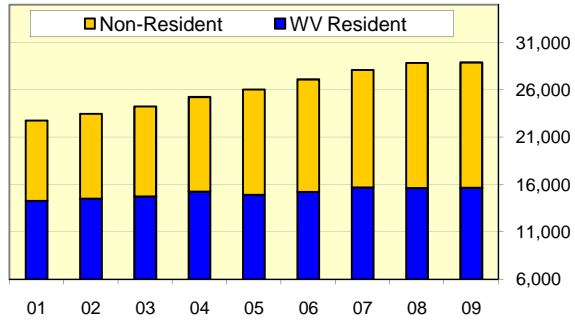
188 degree programs at WVU main campus, 30 at WVU-Tech, and 19 at Potomac State College

25 Rhodes Scholars, 34 Goldwater Scholars, 21 Truman Scholars, 2 Marshall Scholars, and 2 Udall Scholars.

Headcount Enrollment

Term	WV Resident	Non-Resident
Fall 2009	15,669	13,229
Fall 2008	15,654	13,186
Fall 2007	15,709	12,404
Fall 2006	15,224	11,891
Fall 2005	14,942	11,109
Fall 2004	15,272	9,983
Fall 2003	14,773	9,487
Fall 2002	14,539	8,953
Fall 2001	14,278	8,496

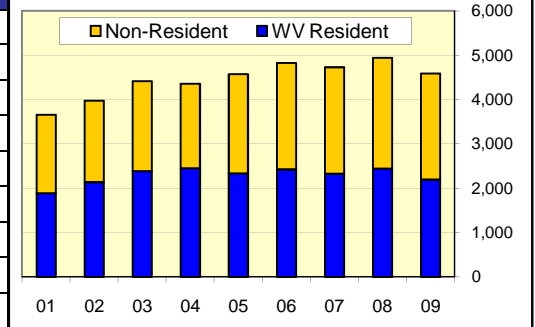
Enrollment by Residency



First-Time Freshmen

Term	WV Resident	Non-Resident
Fall 2009	2,200	2,389
Fall 2008	2,450	2,495
Fall 2007	2,334	2,397
Fall 2006	2,431	2,397
Fall 2005	2,339	2,235
Fall 2004	2,453	1,906
Fall 2003	2,391	2,024
Fall 2002	2,142	1,836
Fall 2001	1,894	1,767

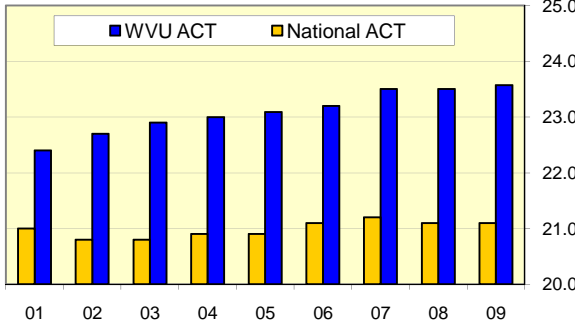
FirstTime Freshmen by Residency



Profile of Entering Freshmen

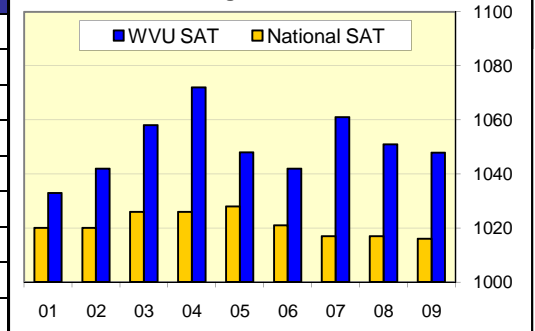
Term	WVU ACT	National ACT
Fall 2009	23.6	21.1
Fall 2008	23.5	21.1
Fall 2007	23.5	21.2
Fall 2006	23.2	21.1
Fall 2005	23.1	20.9
Fall 2004	23.0	20.9
Fall 2003	22.9	20.8
Fall 2002	22.7	20.8
Fall 2001	22.4	21.0

ACT Average, WVU vs. National



Term	WVU SAT	National SAT
Fall 2009	1048	1016
Fall 2008	1051	1017
Fall 2007	1061	1017
Fall 2006	1042	1021
Fall 2005	1048	1028
Fall 2004	1072	1026
Fall 2003	1058	1026
Fall 2002	1042	1020
Fall 2001	1033	1020

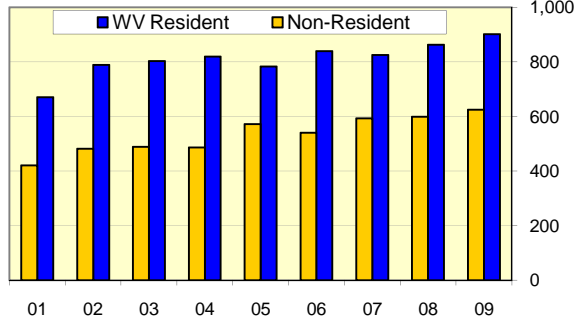
SAT Average WVU vs. National



First-Time Graduate Students

Term	WV Resident	Non-Resident
Fall 2009	901	625
Fall 2008	863	599
Fall 2007	825	593
Fall 2006	839	540
Fall 2005	783	572
Fall 2004	819	487
Fall 2003	803	489
Fall 2002	789	482
Fall 2001	670	421

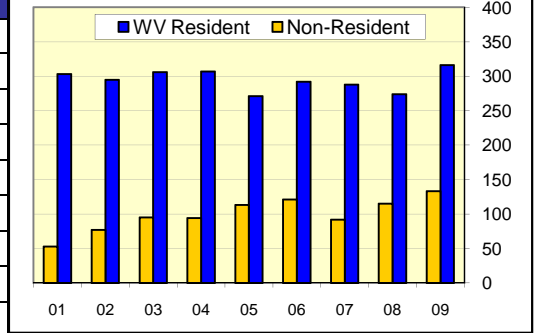
New Graduate Students



First-Time Professional Students

Term	WV Resident	Non-Resident
Fall 2009	316	133
Fall 2008	274	115
Fall 2007	288	92
Fall 2006	292	121
Fall 2005	271	113
Fall 2004	307	94
Fall 2003	306	95
Fall 2002	295	77
Fall 2001	303	53

New Professional Students



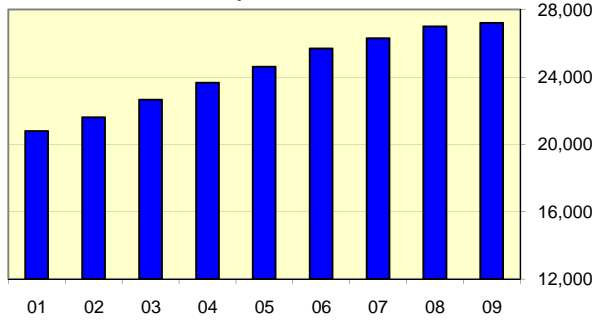
West Virginia University - Decade Reports

West Virginia University - Main Campus Enrollment Profile

WVU FTE Enrollment

Term	FTE
Fall 2009	27,212
Fall 2008	26,997
Fall 2007	26,287
Fall 2006	25,678
Fall 2005	24,601
Fall 2004	23,652
Fall 2003	22,648
Fall 2002	21,588
Fall 2001	20,783

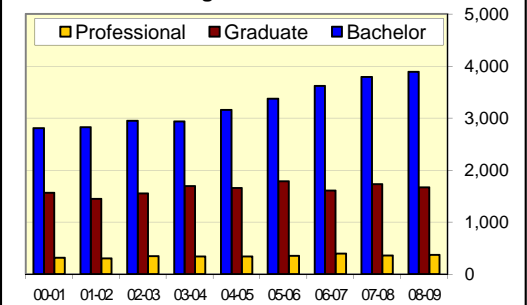
Full-Time Equivalent Enrollment



WVU Degrees Awarded

Year	Bachelor	Graduate	Professional
2008-09	3,892	1,667	367
2007-08	3,790	1,731	355
2006-07	3,620	1,607	396
2005-06	3,372	1,787	351
2004-05	3,157	1,658	337
2003-04	2,938	1,693	338
2002-03	2,950	1,552	343
2001-02	2,824	1,446	303
2000-01	2,808	1,564	316

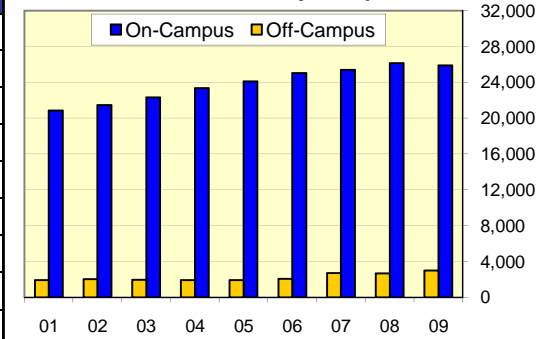
Degrees Awarded



Enrollment by Campus

Term	On-Campus	Off-Campus
Fall 2009	25,901	2,997
Fall 2008	26,153	2,687
Fall 2007	25,386	2,727
Fall 2006	25,034	2,081
Fall 2005	24,112	1,939
Fall 2004	23,337	1,918
Fall 2003	22,300	1,960
Fall 2002	21,473	2,019
Fall 2001	20,857	1,917

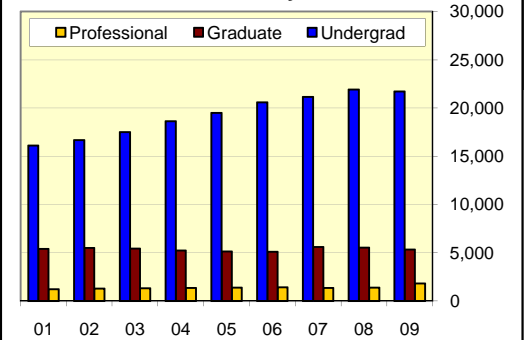
Enrollment by Campus



Enrollment by Level

Term	Undergrad	Graduate	Professional
Fall 2009	21,720	5,349	1,829
Fall 2008	21,930	5,529	1,381
Fall 2007	21,145	5,595	1,373
Fall 2006	20,590	5,105	1,420
Fall 2005	19,510	5,151	1,390
Fall 2004	18,653	5,236	1,366
Fall 2003	17,517	5,423	1,320
Fall 2002	16,692	5,509	1,291
Fall 2001	16,121	5,412	1,241

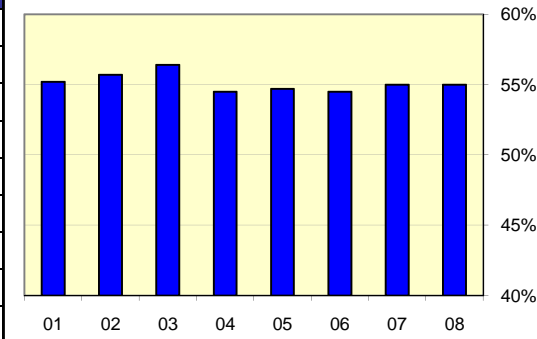
Enrollment by Level



WVU Graduation Rates

Report Year	Cohort Year	Grad Rate
Fall 2009	Fall 2003	56%
Fall 2008	Fall 2002	55%
Fall 2007	Fall 2001	55%
Fall 2006	Fall 2000	55%
Fall 2005	Fall 1999	55%
Fall 2004	Fall 1998	55%
Fall 2003	Fall 1997	56%
Fall 2002	Fall 1996	56%
Fall 2001	Fall 1995	55%

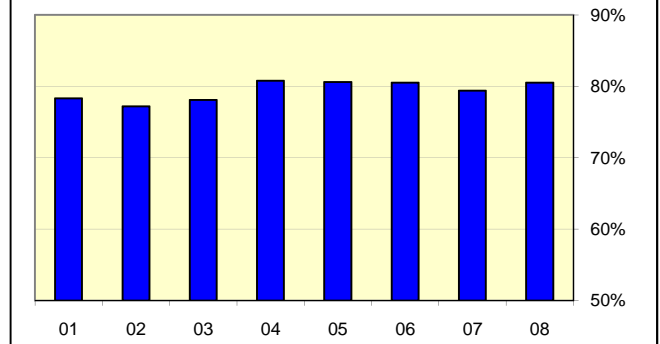
Graduation Rates



WVU Retention Rates

Report Year	Cohort Year	Retention Rate
Fall 2009	Fall 2008	79.8%
Fall 2008	Fall 2007	80.5%
Fall 2007	Fall 2006	79.4%
Fall 2006	Fall 2005	80.5%
Fall 2005	Fall 2004	80.6%
Fall 2004	Fall 2003	80.8%
Fall 2003	Fall 2002	78.1%
Fall 2002	Fall 2001	77.2%
Fall 2001	Fall 2000	78.3%

Retention Rates



Reporting Year

Reporting Year